



Kongsberg Maritime
10.01 Course information



© Kongsberg



K-Training
10.01 Course information

DMS no: 1085163A

© Kongsberg

2

Course Participant Presentation



- Name
- Company
- Position onboard
- Education
- Maritime experience
- Experience with Kongsberg equipment
- Expectations to this course

Kongsberg Maritime Presentation



Customer Support



- Full support on all product lines
- Global support network
- 24h main contacts
- On-call service
- Upgrades and modification
- Commissioning
- Product & system training
- Onboard training and assistance



5

HMS and practical information



- Fire instruction – training centre
 - [Carpus](#)
 - [Macao](#)
 - [Korea](#)
 - [Aberdeen](#)
 - [Manila](#)
 - [Horten](#)
- Coffee break and lunch
- Student telephone and PC
- Toilets
- Smoking

6

AIM, ROLE and EXPECTATIONS



- AIM
 - Kongsberg Maritime general aim for the product training, is to provide high-end product training in order to improve course participants knowledge and skill on the product
 - This is demonstrated through the learning objectives established for each product training course
- ROLE
 - Kongsberg Maritime has in agreement with your employer been given the responsibility to provide product training
 - Kongsberg Maritime is sometimes also given the responsibility to assess each student and to report this assessment back to the employer
- Kongsberg Maritime's expectation to the course participants
 - Respect for the instructor and the other course participants
 - Respect for different culture and religions
 - Respect for those rules and regulations KM has to follow in order to fulfill the agreement with your employer
 - Kongsberg Maritime expect that all course participants use efforts to achieve the learning objectives together with the instructor
 - That you give us your feedback during and especially at the end of the course - in order for us to continuously improve
- Your expectations?

7

DNV approved courses



- General info:
 - Assessment of the course material
 - Assessment of the instructors
 - Requirement for test and examination
- What does it mean for us?
 - Kongsberg Maritime obliged to provide the courses in accordance with the agreement with DNV
 - Kongsberg Maritime obliged to perform a test and examination of all student objected to a certificate
 - Agreement with customer prior to each course whether the course participants shall be given a certificate or not. Certification requires a score of 80% at the final test
- What does it mean for you?
 - At the end of the course there will be a final test where the requirement for passing is 80%
 - A certificate is not issued to those who do not pass the final test

8

Course Evaluation



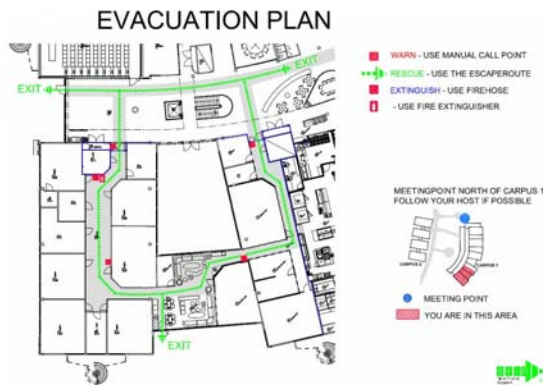
- Why evaluate the course:
 - We do believe in continuously improvement, and your evaluation and feedback is of great value in this process
- Did you met our expectations?
- Did we met your expectations?

9

Carpus fire instruction.



- The following evacuation procedure shall be followed. Calmly begin the evacuation.
- Do not use lifts.
- Evacuate the building using emergency exits.
- Do not use the main entrance. This may obstruct the firemen from entering the building.
- Go to the evacuation assembly points.
The assembly points are at the *northern and southern gates*.
- Course participants shall report to their instructor.



10

Horten fire instruction.



- The following evacuation procedure shall be followed.
- Calmly begin the evacuation.
- We will meet in front of building no 2.
- Course participants shall report to their instructor.



11

Korea fire instruction.



- The following evacuation procedure shall be followed.
- Calmly begin the evacuation.
- Go to the evacuation assembly points.
- Course participants shall report to their instructor.

12

K-Chief 700 Step II Course Description

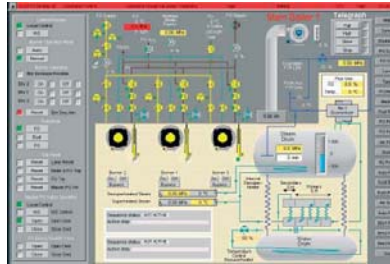


Duration

- 3-5 days depending on system complexity

Content of course

- Introduction to K-Chief 700
- System overview
- Main system components
- Hardware module descriptions
- Loop typicals
- Serial line theory
- I/O configuration
- Maintenance of hardware
- Troubleshooting through practical exercises



13

K-Chief 700 Maintenance course



	Day 1	Day 2	Day 3	Day 4	Day 5
09.00	Course information	Exercises	Exercises	OS	Profibus Stahl
09.30	System overview				Exercises
10.00	Break	Break	Break	Break	Break
10.15	Operating repetition	RCU501	Redundancy	Exercises	Watch call
11.00		FS Units	Exercises		Summary End of the course
12.00	Lunch	Lunch	Lunch	Lunch	Lunch
12.45	Exercise	Exercises	IO SW	Serial lines	
13.30	FS-400C-R1		Exercises		
14.15	Break	Break	Break	Break	
14.30	IO-list	RIO Units	Exercises	Exercises	
	Exercises	Exercises			
15.30					

14