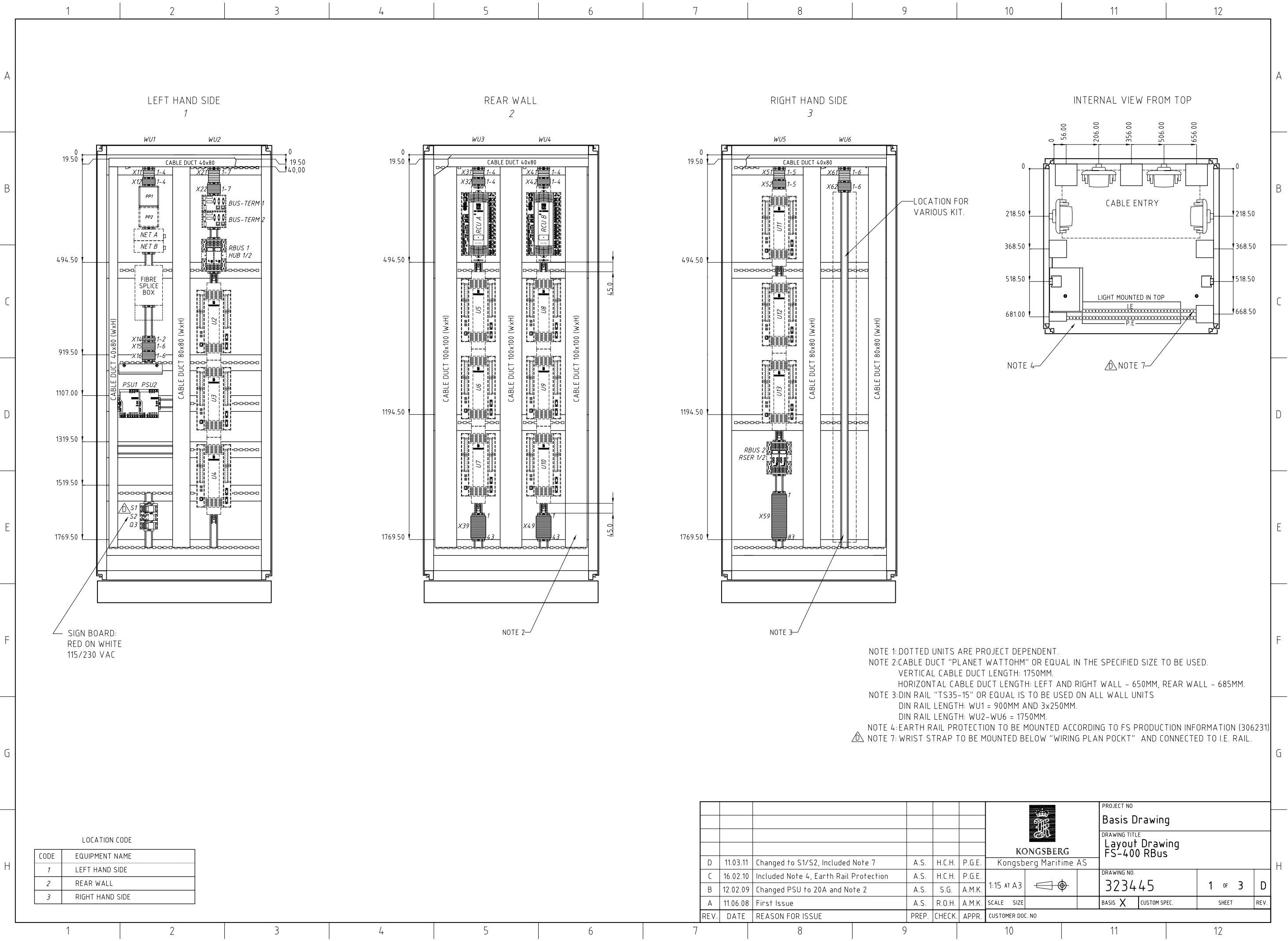


The copyright of this drawing and of all annexes which are entrusted to a person's care always remain the property of Kongsberg Maritime AS. They must not be copied or duplicated nor shown to or placed at the disposal of third persons without our written consent.



SIGN BOARD:  
RED ON WHITE  
115/230 VAC

LOCATION CODE	
CODE	EQUIPMENT NAME
1	LEFT HAND SIDE
2	REAR WALL
3	RIGHT HAND SIDE

- NOTE 1: DOTTED UNITS ARE PROJECT DEPENDENT.
- NOTE 2: CABLE DUCT "PLANET WATTOHM" OR EQUAL IN THE SPECIFIED SIZE TO BE USED.  
VERTICAL CABLE DUCT LENGTH: 1750MM.  
HORIZONTAL CABLE DUCT LENGTH: LEFT AND RIGHT WALL - 650MM, REAR WALL - 685MM.
- NOTE 3: DIN RAIL "TS35-15" OR EQUAL IS TO BE USED ON ALL WALL UNITS  
DIN RAIL LENGTH: WU1 = 900MM AND 3x250MM.  
DIN RAIL LENGTH: WU2-WU6 = 1750MM.
- NOTE 4: EARTH RAIL PROTECTION TO BE MOUNTED ACCORDING TO FS PRODUCTION INFORMATION (306231)
- NOTE 7: WRIST STRAP TO BE MOUNTED BELOW "WIRING PLAN POCKET" AND CONNECTED TO I.E. RAIL.

							PROJECT NO				
							Basis Drawing				
							DRAWING TITLE				
							Layout Drawing FS-400 RBus				
							DRAWING NO.				
							323445				
					SCALE SIZE		BASIS X		CUSTOM SPEC.	SHEET	REV.
							CUSTOMER DOC. NO		1 OF 3		D
REV.	DATE	REASON FOR ISSUE	PREP.	CHECK.	APPR.						