



KONGSBERG

MP7900

Backup/Restore and XP Installation Procedures

These procedures describes how to make backup and restore via DVD, via external USB hard disk, and how to install XP operating system on the MP7900 Maritime computer.

330249/B

September 2010 © Kongsberg Maritime AS

Document history

Document number: 330249		
Rev. A	February 2009	First version.
Rev. B	September 2010	New screen dumps and information in <i>Backup and Restore procedures via external USB hard disk</i> on page 10.

Note

The information contained in this document remains the sole property of Kongsberg Maritime AS. No part of this document may be copied or reproduced in any form or by any means, and the information contained within it is not to be communicated to a third party, without the prior written consent of Kongsberg Maritime AS.

Kongsberg Maritime AS endeavours to ensure that all information in this document is correct and fairly stated, but does not accept liability for any errors or omissions.

Comments

To assist us in making improvements to the product and to this manual, we welcome comments and constructive criticism.

e-mail: km.documentation@kongsberg.com

Table of contents

INTRODUCTION	5
General	5
MP7900 Computer System Backup DVD.....	5
MP7900 Computer System Setup DVD.....	5
PROCEDURES	6
Backup and Restore procedures via DVD.....	6
Performing backup/restore via the System Backup DVD	6
Performing backup/restore via the System Setup DVD	7
How to backup the computer hard disk to DVD	7
How to restore the computer hard disk from DVD	9
Backup and Restore procedures via external USB hard disk.....	10
How to prepare a USB boot hard disk, OS Image Backup.....	11
How to back up the computer hard disk to external USB hard disk.....	18
How to restore the computer hard disk from external USB hard disk	20
How to install XP operating system.....	23

Introduction

General

If the MP7900 computer hard disk needs to have its software restored or the disk needs to be replaced, you will in both cases need a backup of its software as it was after last time it was updated.

Note

For safety, it is advisable to perform regular backup of files from the computers hard disk.

The following procedures are described in this document:

- How to perform backup of computer files to DVD
- How to perform restore of backed up files from DVD
- How to perform backup of computer files to external USB hard disk
- How to perform restore of backed up files from external USB hard disk
- How to install XP operating system

MP7900 Computer System Backup DVD

The System Backup DVD contains the following:

- XP operating system
- Backed up files, DVD marked with date for the last performed backup
- Serial number of DVD set

MP7900 Computer System Setup DVD

The System Setup DVD contains the XP operating system.

Procedures

This chapter gives procedures for the following:

- Backup and Restore Procedures via DVD
- Backup and Restore Procedures via external USB hard disk
- How to install XP operating system

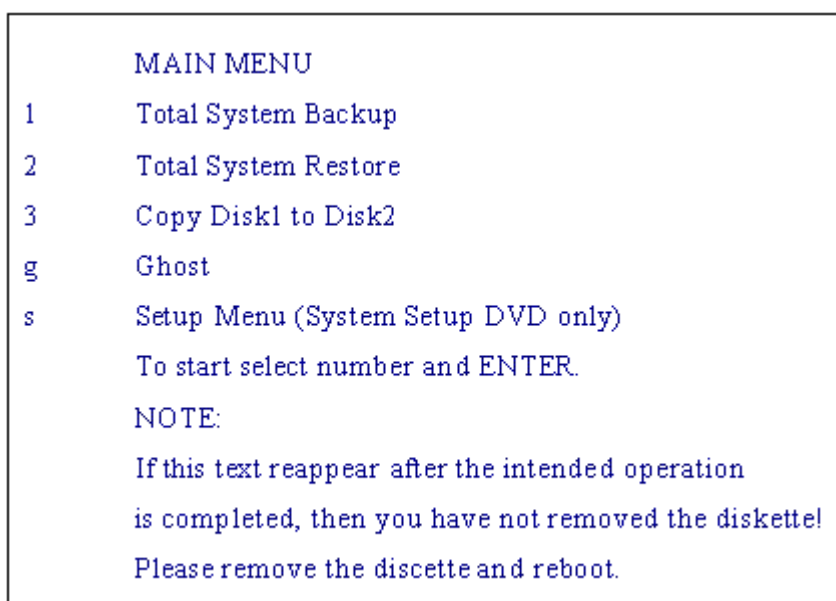
Backup and Restore procedures via DVD

The Backup/Restore may be performed both via the *System Backup* DVD and via the *System Setup* DVD.

Performing backup/restore via the System Backup DVD

After rebooting the system using the System Backup DVD, the following MAIN MENU is displayed:

Figure 1 Main Menu



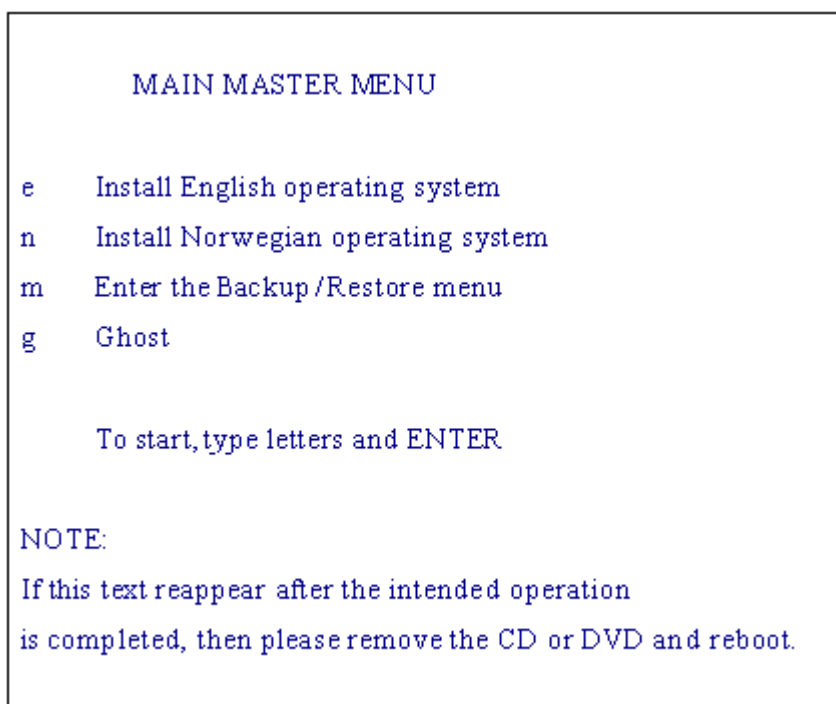
bm090504a

You use selection **1** (Total System Backup) on the **MAIN MENU** to make a complete backup of the hard disk to the DVD-RW. You use menu selection **2** (Total System Restore) to restore the information from the DVD-RW to the hard disk.

Performing backup/restore via the System Setup DVD

After re-booting the system using the *System Setup* DVD, the following **MAIN MASTER MENU** is displayed:

Figure 2 Main Master Menu



bm090505a

You use selection **m** to enter the Backup/Restore menu. This will enter the **MAIN MENU** (as described in *Main Menu* on page 6).

When entered the **MAIN MENU**, use selection **1** (Total System Backup) to make a complete backup of the hard disk to the DVD-RW, and selection **2** (Total System Restore) to restore the information from the DVD-RW to the hard disk.

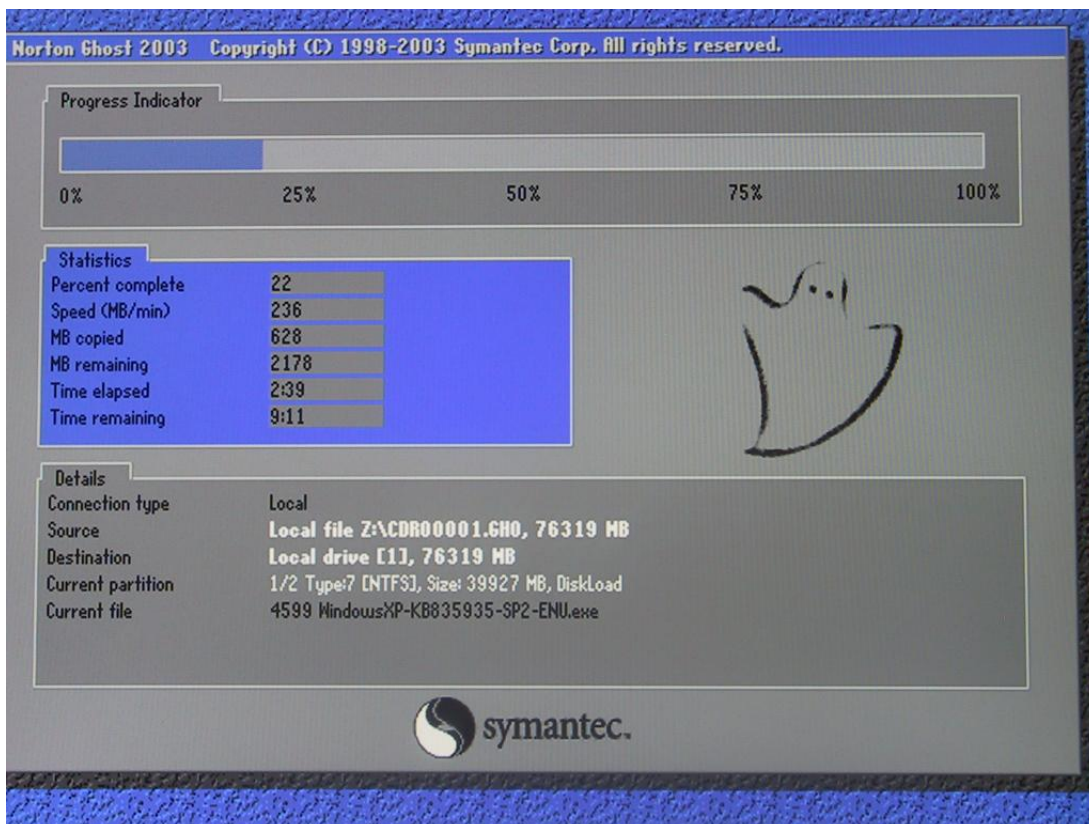
How to backup the computer hard disk to DVD

The following procedure shows how to take a complete system backup of the MP7900 computer.

- 1 Insert the latest *System Backup* DVD (disk no. 1 of y) into the computer DVD-RW drive.
- 2 Reboot the computer by pressing the ON-OFF switch on the computer and wait until the computer is totally shut down. Then press the **ON-OFF** switch to restart.

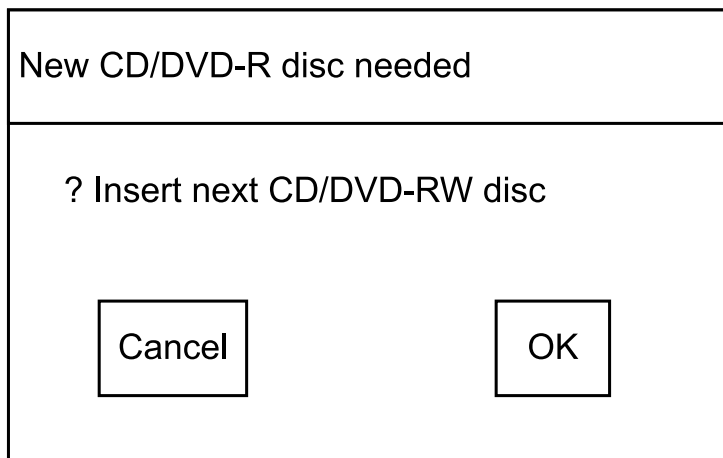
The **MAIN MENU** followed by the DOS prompt **Q:\>** is displayed, (refer to *Main Menu* on page 6).

- 3 Type **1** and press **Enter**. This executes the **Total System Backup** command in the **MAIN MENU**.
- 4 The text :
“PLEASE IGNORE GHOST’S NOTIFICATION ABOUT “DISK 2”.
THIS IS AUTOMATICALLY TAKEN CARE OF.”
Press any key to continue . . .
- 5 Press a key on the keyboard. The following text is displayed:
“If You are using Boot Diskettes created by the Ghost Boot Wizard
ensure you have disk 2 (containing Ghost.exe) available when booting from
CD/DVD.”
- 6 Remove the *System Backup* DVD from the computer DVD-RW drive, and insert a blank DVD-RW.
- 7 Click **OK**.
- 8 Follow the Progress Indicator in the displayed dialog box:



bm090506a

- 9 If one DVD-RW is full, the following dialog box pops up:



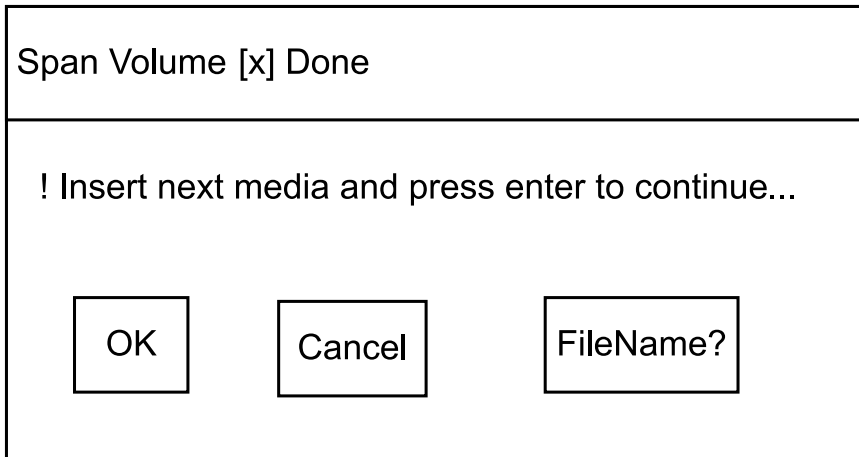
(Vis1134b)

- 10 Swap the DVD-RW disk with a new one and click **OK** to continue.
- 11 Mark the DVD-RW disk with **DVD x of y** using a suitable pen.
- 12 Repeat steps 9, 10 and 11 until the backup is complete.
- 13 When the Backup is complete, the following message is displayed.
**“Total System Backup finished!
Press any key to continue...”**
- 14 Remove the last DVD-RW disk, mark the disk with **DVD x of y** using a suitable pen.
- 15 Press **Enter**.
The DOS prompt **Q:\>** is displayed.
- 16 Reboot the computer by turning it **OFF** and then **ON**.
- 17 Label the DVD-RW disks with the name of the operator station, computer serial number and date of the backup before you store the backup in a safe place.

How to restore the computer hard disk from DVD

The following procedure shows how to Restore a complete system backup of a computer.

- 1 Insert the latest *System Backup* DVD (disk no. 1 of y) into the computer DVD-RW drive.
- 2 Reboot the computer by turning it **OFF** and then **ON**.
The **MAIN MENU** followed by the DOS prompt **Q:\>** is displayed, (refer to *Main Menu* on page 6).
- 3 Type **2** and press **Enter**.
This executes the **Total System Restore** command in the **MAIN MENU**.
- 4 Follow the Progress Indicator dialog box (refer to *How to backup the computer hard disk to DVD* on page 7).
When one backup CD is read, the following dialog box pops up.



(Vis1133)

- 5 Swap the DVD-RW disk with the next one and click **OK** to continue.
- 6 Repeat steps 4 and 5 until the restore is complete.
- 7 When the restore is complete, the following message is displayed.
**“Total System Restore finished!
Press any key to continue...”**
- 8 Remove the last DVD-RW disk.
- 9 Press **Enter**.
The DOS prompt **Q:\>** is displayed.
- 10 Reboot the computer by turning it **OFF** and then **ON**.
The computer now starts the Windows XP and the SXX/NAVXX application programs as appropriate. The restore is now completed.
- 11 If a dialog box is shown telling:
“Device settings have been changed. Do you want to reboot now to activate changes?”
Then click **No** in this dialog box because the computer has been restarted already without being able to show this message.

Backup and Restore procedures via external USB hard disk

Note

This procedure is to be performed by KM personnel only.

Hardware required: External Hard Drive with USB connection (USB 2.0).

The USB Image Backup disk does not boot properly when the new USB panels are connected. Therefore the USB panel needs to be disconnected before connecting the USB disk and rebooting the system for backup.

The procedure is as follows:

- 1 Shut down the OS.
- 2 Unplug the USB panel from the OS/PC.
- 3 Connect the USB backup disk.
- 4 Power On the OS and follow regular backup/restore procedure.
- 5 **IMPORTANT:** Reconnect the USB panel before restarting the OS again.

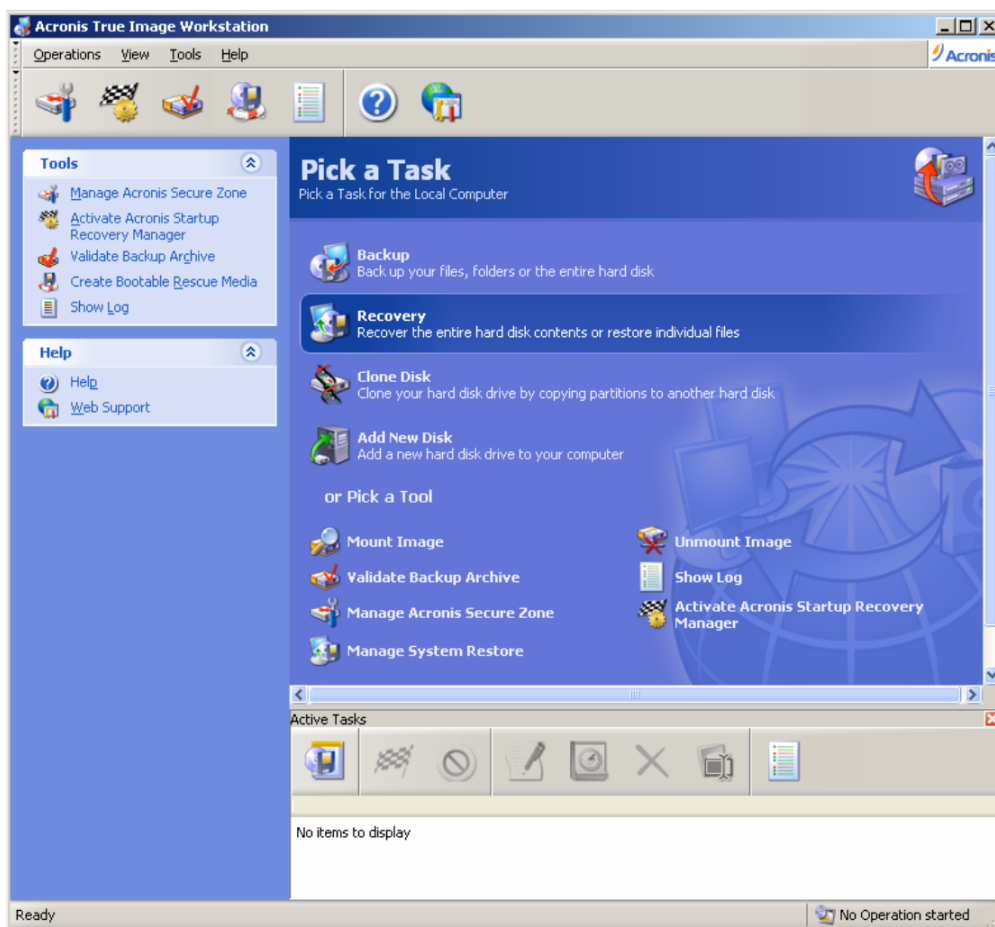
How to prepare a USB boot hard disk, OS Image Backup

Software required: Pre-installed *Acronis True Image* on the local PC (Standard KM backup utility).

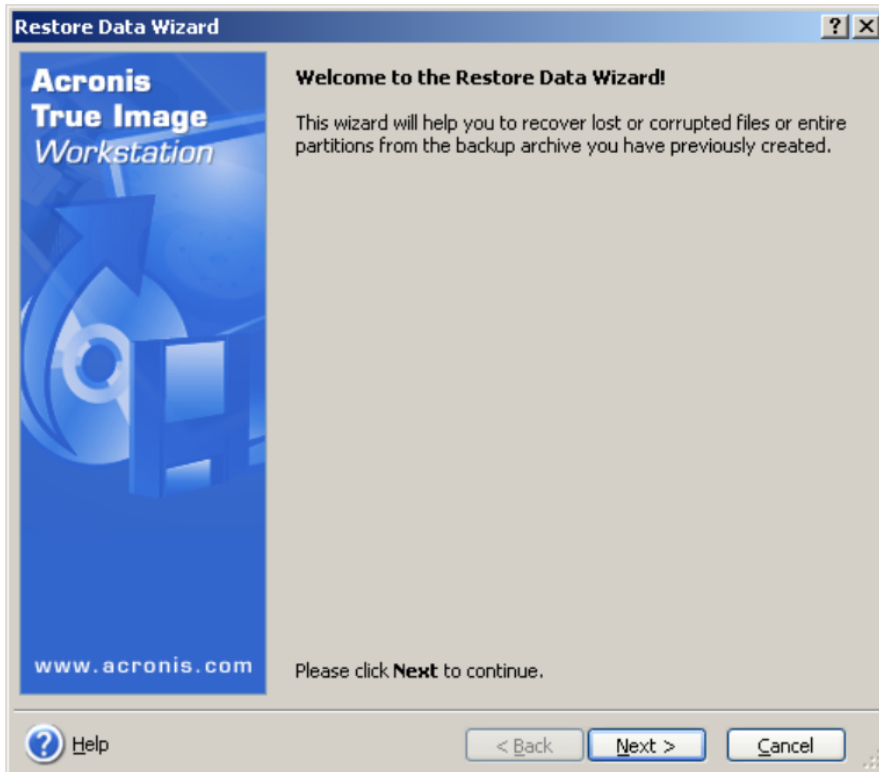
Download the image file from KSWeb:

http://ksweb/KMA/Local_files/Tools/Utilities/USB_Restore.tib.

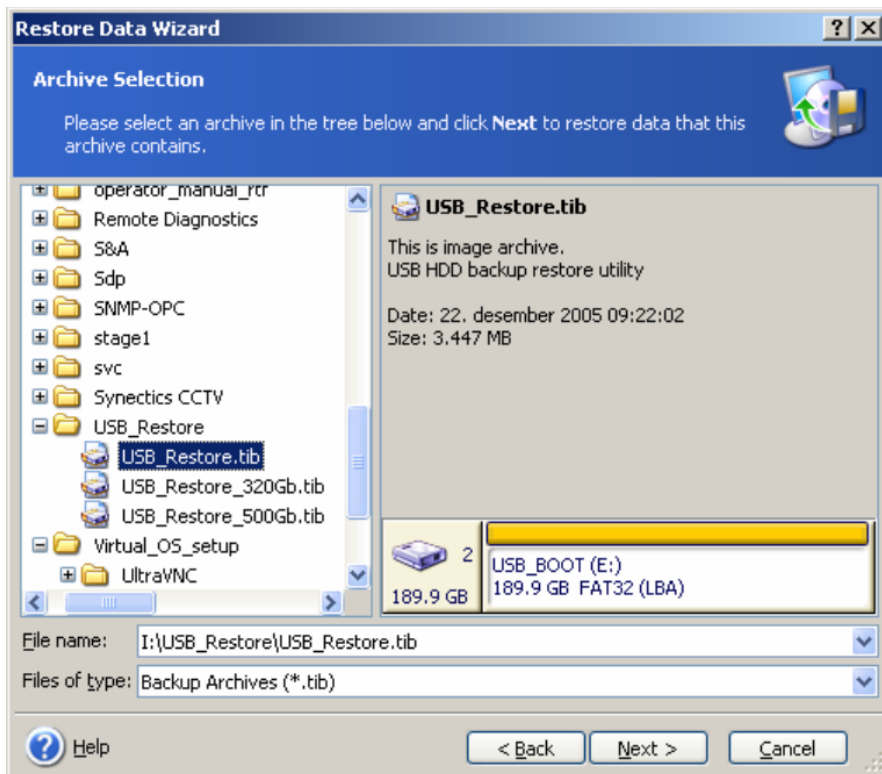
- 1 Connect the empty USB hard disk to your computer.
- 2 Start *Acronis True Image* from Windows and the following dialog is displayed:



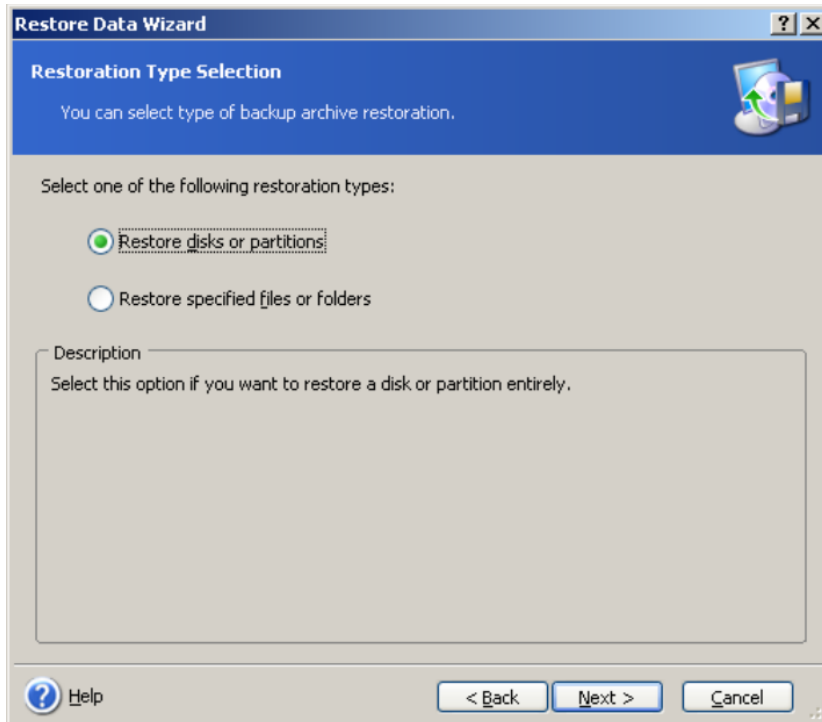
3 Select **Recovery** and the following dialog is displayed:



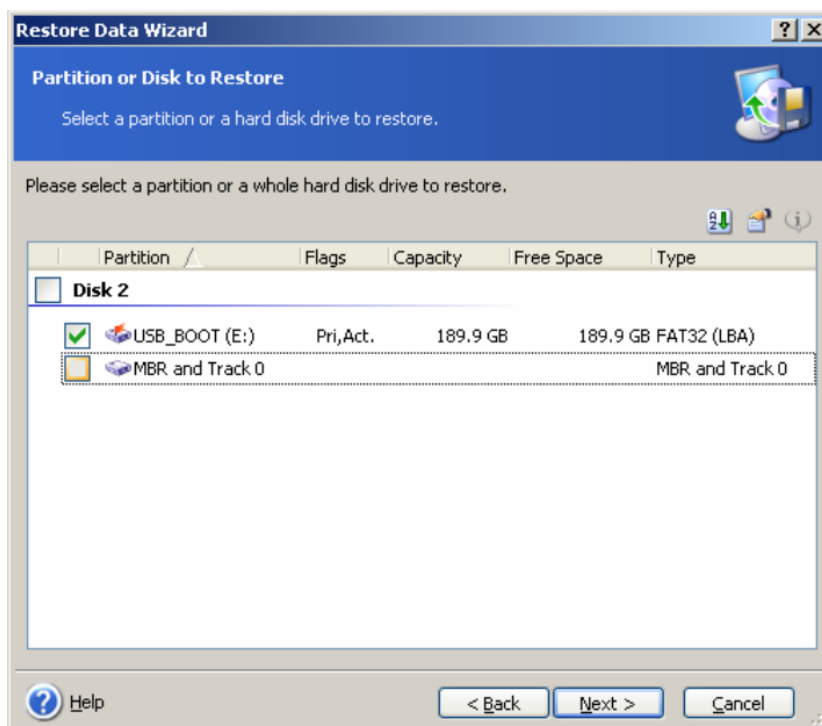
4 Click **Next** and the following dialog is displayed:



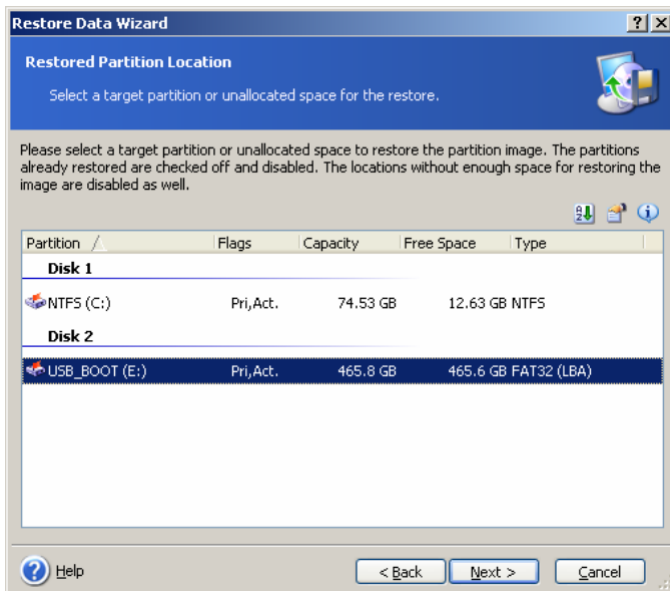
- 5 Find and select the image file *USB_Restore.tib*.
- 6 Click **Next** and the following dialog is displayed:



- 7 Select **Restore disks or partitions**.
- 8 Click **Next** and the following dialog is displayed:



- 9 Select the partition to restore. Do not select the Master Boot Record (MBR), it will prevent you from resizing the partition to fit a larger disk. Click **Next** and the following dialog is displayed:



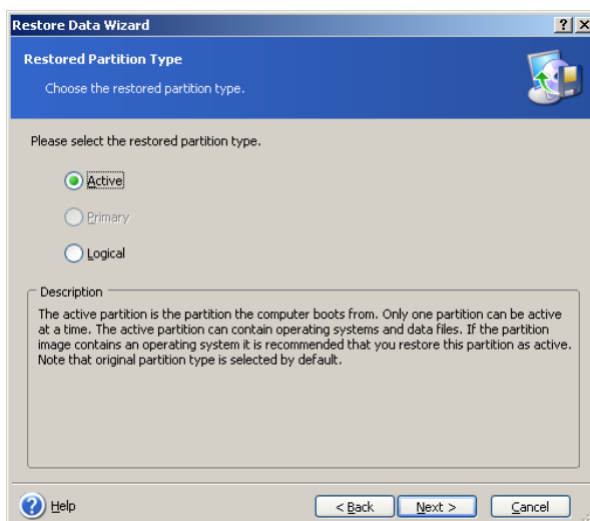
- 10 Select the Empty External USB hard disk.

Note

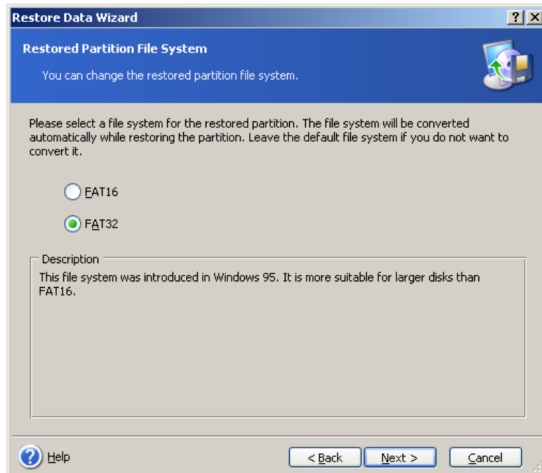
It is extremely important that you select the empty disk, because all other data on this disk will be erased.

Sometimes the selection window/frame needs to be scaled in order to display drive alternatives.

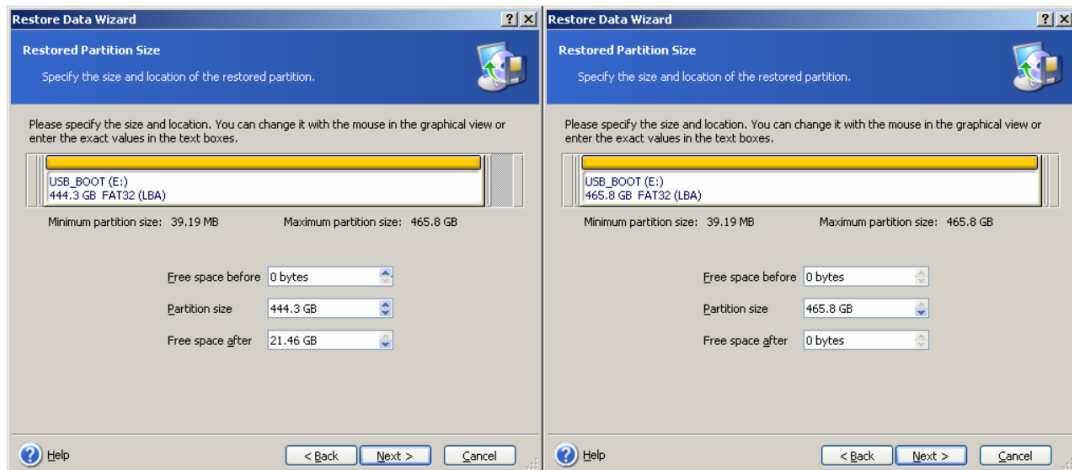
- 11 Click **Next** and the following dialog is displayed:



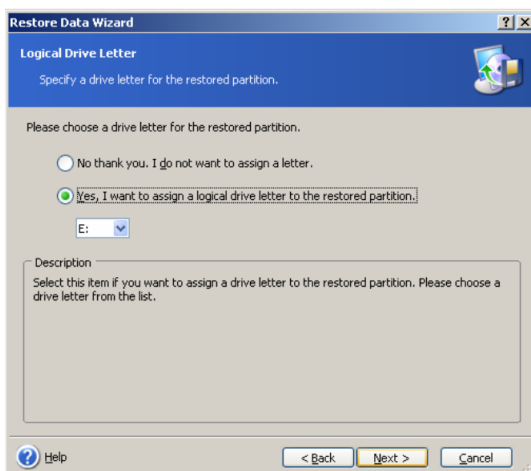
- 12 Select **Active**, click **Next** and the following dialog is displayed:



13 Select **FAT32**, click **Next** and the following dialog is displayed:



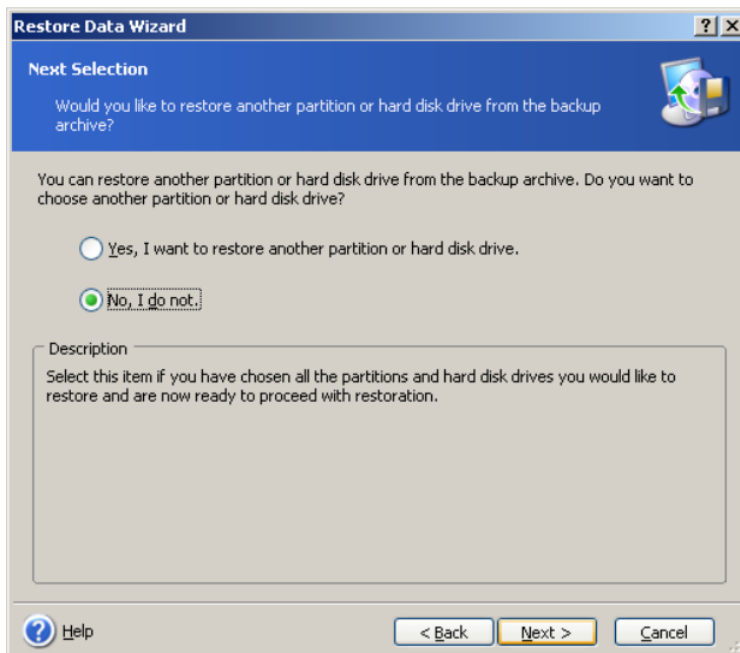
14 Be sure that the new partition size is equal to the maximum size. If not (left figure above), drag the handle to the right frame to close the empty space (right figure). Click **Next** and the following dialog is displayed:



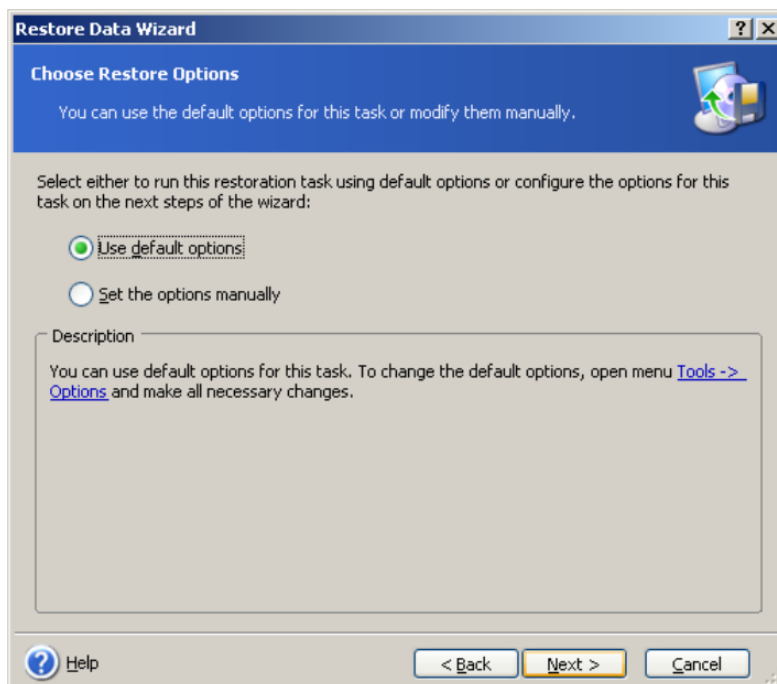
- 15 Select **Yes, I want to assign a logical drive letter to the restored partition**, click **Next** and the following dialog is displayed:

Note

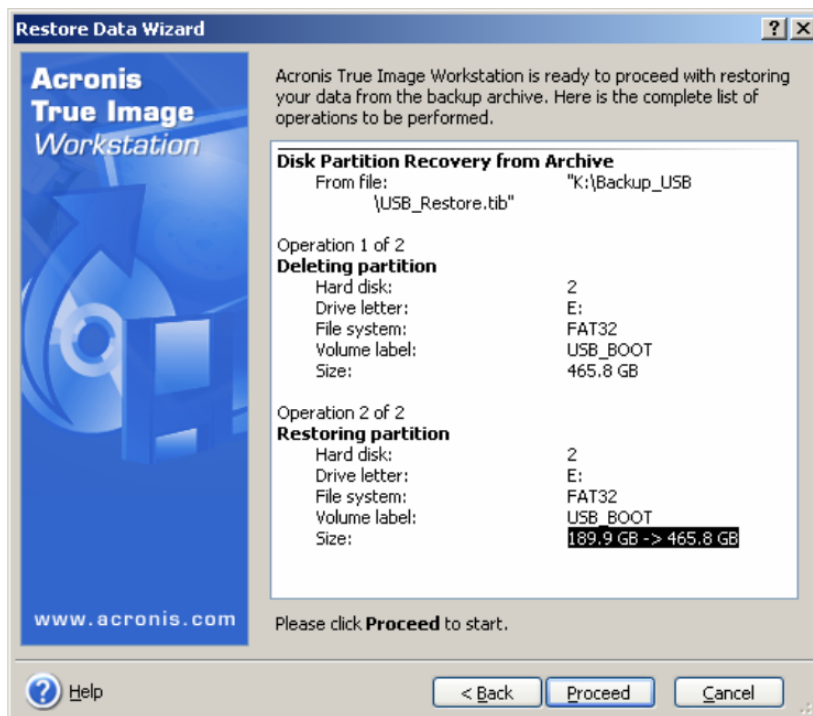
The first free virtual drive on your computer is displayed from the drop-down list.



- 16 Select **No, I do not**, click **Next** and the following dialog is displayed:



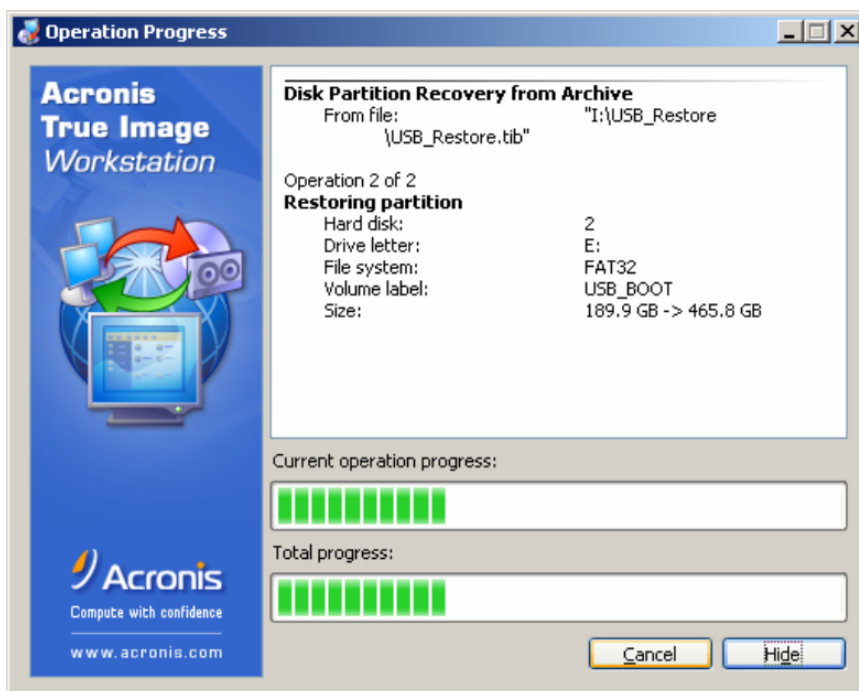
- 17 Select **Use default options**, click **Next** and the following dialog is displayed:

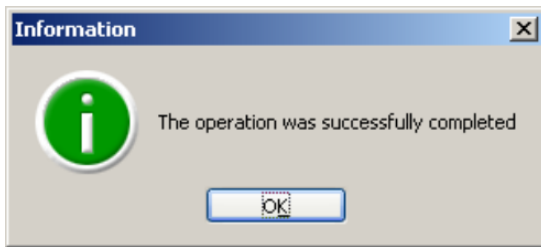


Note

Notice that the restoring partition size has changed.

- 18 Click **Proceed** and the following progress dialog, followed by the completion confirmation dialog, is displayed:





- 19** You are now ready to use your USB-drive.

Testing needs to be done on an AIM-OS (MP530/MP7600/MP7900 or similar).

Note

The disk will not boot properly on some laptops, e.g. HP Compaq nw8240, due to incompatibilities.

- 20** To use/test the USB-drive.
- a** Plug it into an AIM-OS and reboot.
 - b** Follow the instructions on screen.

How to back up the computer hard disk to external USB hard disk

- 1** Connect the external USB hard disk to a free USB port on the OS.
- 2** Connect power to the external USB hard disk using the power cable following the USB hard disc.
- 3** The following Startup menu is displayed:

```
Microsoft Windows Startup Menu
-----
1. Create Backup Image File (USB 2.0 HDD)
2. Restore OS from Backup Image File (USB 2.0 HDD)
3. Start DOS (USB 2.0 & CD-ROM)

Enter a choice:           Time remaining: 69
```

bm090511a

- 4** Select **1** for creating backup image file and the following dialog is displayed:

```

                BACKUP
                *****
                USING FOLDERS CURRENTLY IN THE BACKUP DIRECTORY:

                Do you want to store your backup files into a old/previous directory ?

                        Y           Yes
                        N           No
                Please choose: [Y,N]?
    
```

bm090512a

5 Type N and the following dialog is displayed:

```

                CHOOSE FOLDER
                *****

                There must be a delivery specific folder that shall contain the backup file
                (*.GHO + *.GS).
                Type in f.ex the delivery number, max 8 characters.

                Type in the name of the folder where you want the files to be stored: w7285

                You typed   : w7285
                           -:--:--:--

                Is this folder name correct?

                        Y           Yes
                        N           No (Type again)

                Please choose:[Y,N]?
    
```

bm090513a

6 Type in **Folder name**, verify correct folder name and type **Y** and the following dialog is displayed:

```

                CHOOSE FILENAME
                *****

                Type in max 8 characters in the OS name. Use "OS" # "number".
                If the number is between 1-9: use "0" infront of the "number"
                this will make it to be OS01, OS08, OS22.
                Other names may also be used, Example: OPC1, FDT, APPSRV etc.

                Type in the name of the OS you want to backup: OS03

                You typed   : OS03
                           -:--:--:--

                Is this folder name correct?

                        Y           Yes
                        N           No (Type again)

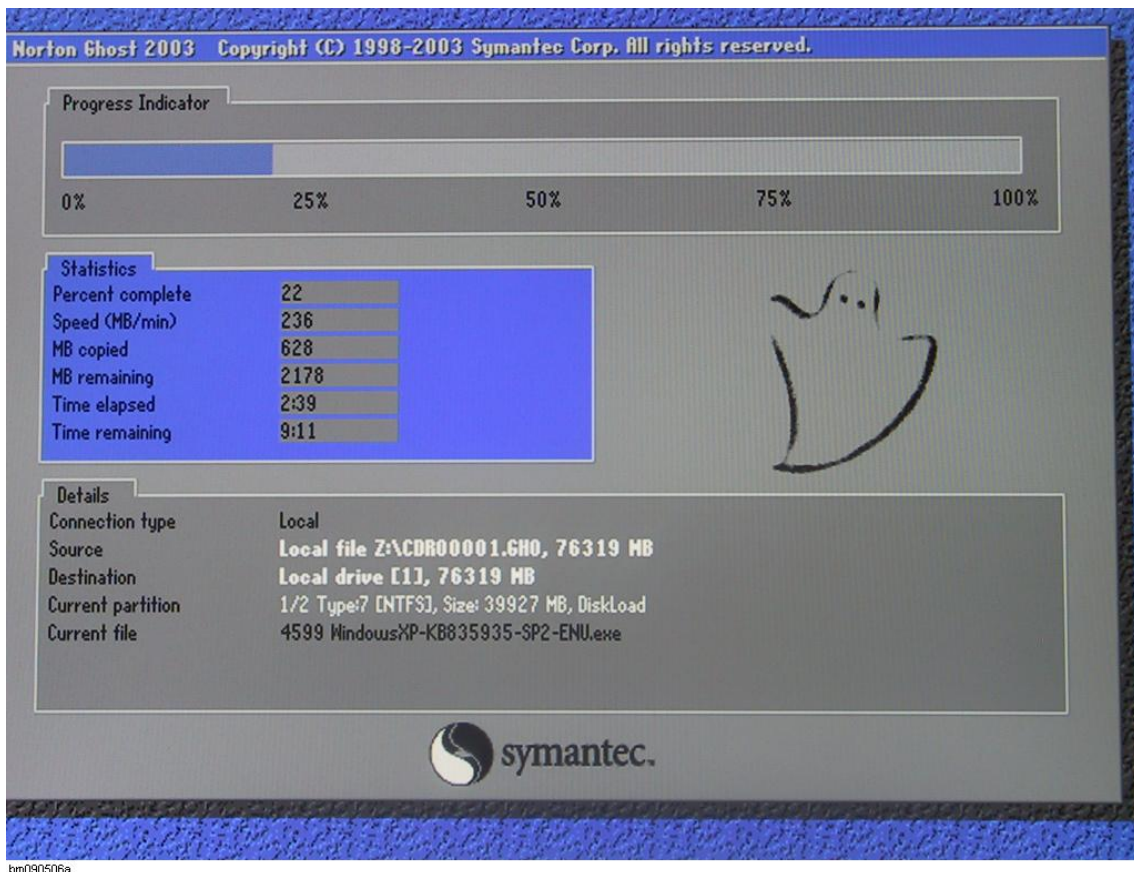
                Please choose:[Y,N]?
    
```

bm090514a

- 7 Type in **Filename**, verify correct file name and type **Y**.
- 8 The backup will start and a dialog like the one below is displayed. Follow the progress indicator to get an idea about remaining backup time.

Note _____

Depending on the size of the hard disk, the backup time may take as much as 20-30 minutes.



- 9 When backup is finished, the dialog is closed and the DOS prompt is displayed, like this:

C:>IMAGES

How to restore the computer hard disk from external USB hard disk

- 1 Connect the external USB hard disk to a free USB port on the OS.
- 2 Connect power to the external USB hard disk using the power cable following the USB hard disc.
- 3 The following Startup menu is displayed:

```

Microsoft Windows Startup Menu
-----
1. Create Backup Image File (USB 2.0 HDD)
2. Restore OS from Backup Image File (USB 2.0 HDD)
3. Start DOS (USB 2.0 & CD-ROM)

Enter a choice:          Time remaining: 69
    
```

bm090511a

4 Select 2 for restoring from backup image file and the following dialog is displayed:

```

List of the available folders for Restore:
*****
W7285
GHOSTERR.TXT
Type in the name of the folder where the backup is located:

Type in the name of the folder: w7285

You typed : w7285
          -:--:--

Is this correct?

                Y      Yes
                N      No (Type again)

Please choose:[Y,N]?
    
```

bm090515a

5 Type in **Folder name**, verify correct folder name and type **Y** and the following dialog is displayed:

```

List of available backups
*****
OS03.GHO
OS04.GHO
OS04001.GHS
OS04002.GHS
Type in the name of the backup that shall be written to the harddrive
in the OS. Use only the OS-name + number (Do not include ".gho").
Type in name: OS04

The Restore file name is: OS04.gho

All data on the harddrive will be erased!
(Overwritten with backup .gho, from external USB-harddrive)

You typed:  OS04
          -:--:--

Is this correct?

                Y      Yes
                N      No (Type again)

Please choose:[Y,N]?
    
```

bm090516a

- 6 Type in **Restore file name**, verify correct file name and type **Y** .

The following dialog is displayed:

Question : (1825)
Pattern sizes correct?

- 7 Click **Yes**.

Before restore is started, the following is displayed:

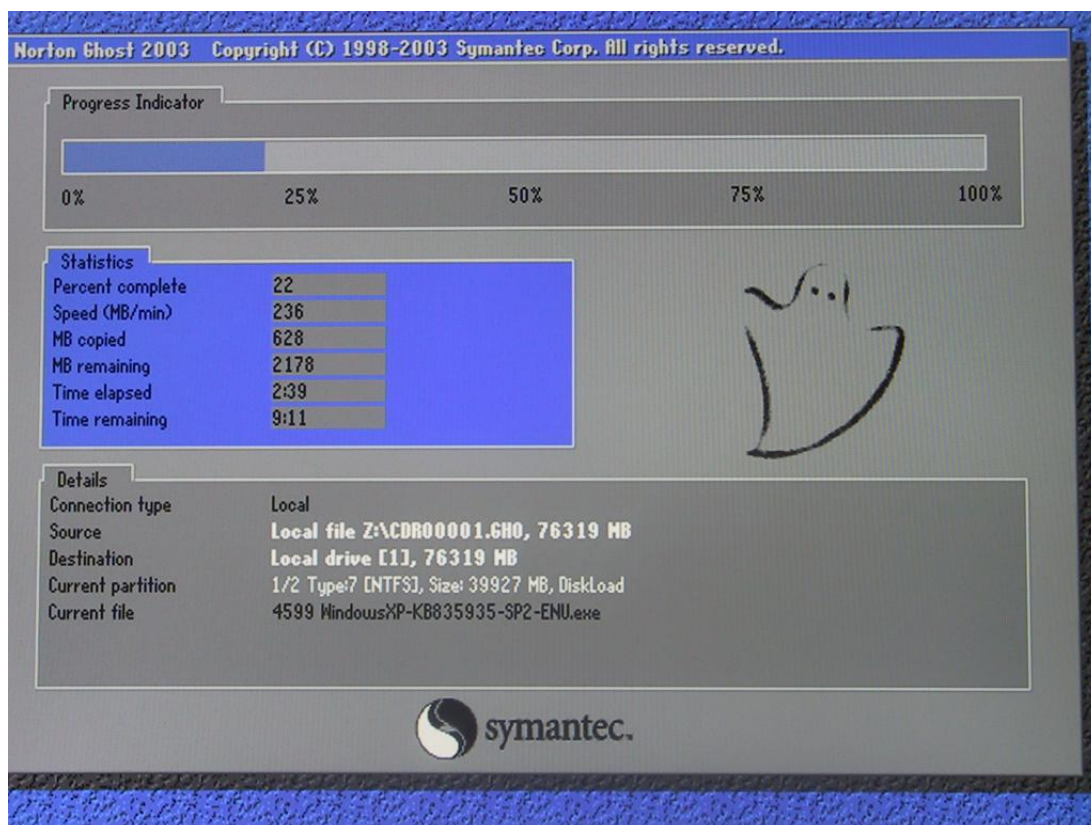
Question : (1822)
Proceed with disk restore?
Destination drive will be permanently overwritten

- 8 Click **Yes**.

The restore process will start and a dialog like the one below is displayed. Follow the progress indicator to get an idea about remaining restore time.

Note

Depending on the number and size of the files to be restored, the restore time may take as much as 20-30 minutes.



When the restore process is finished, the following question will be displayed:

Clone Complete: (1912)
Clone Completed successfully

- 9 Click **Continue**, the dialog is closed and the restore is finished.

How to install XP operating system

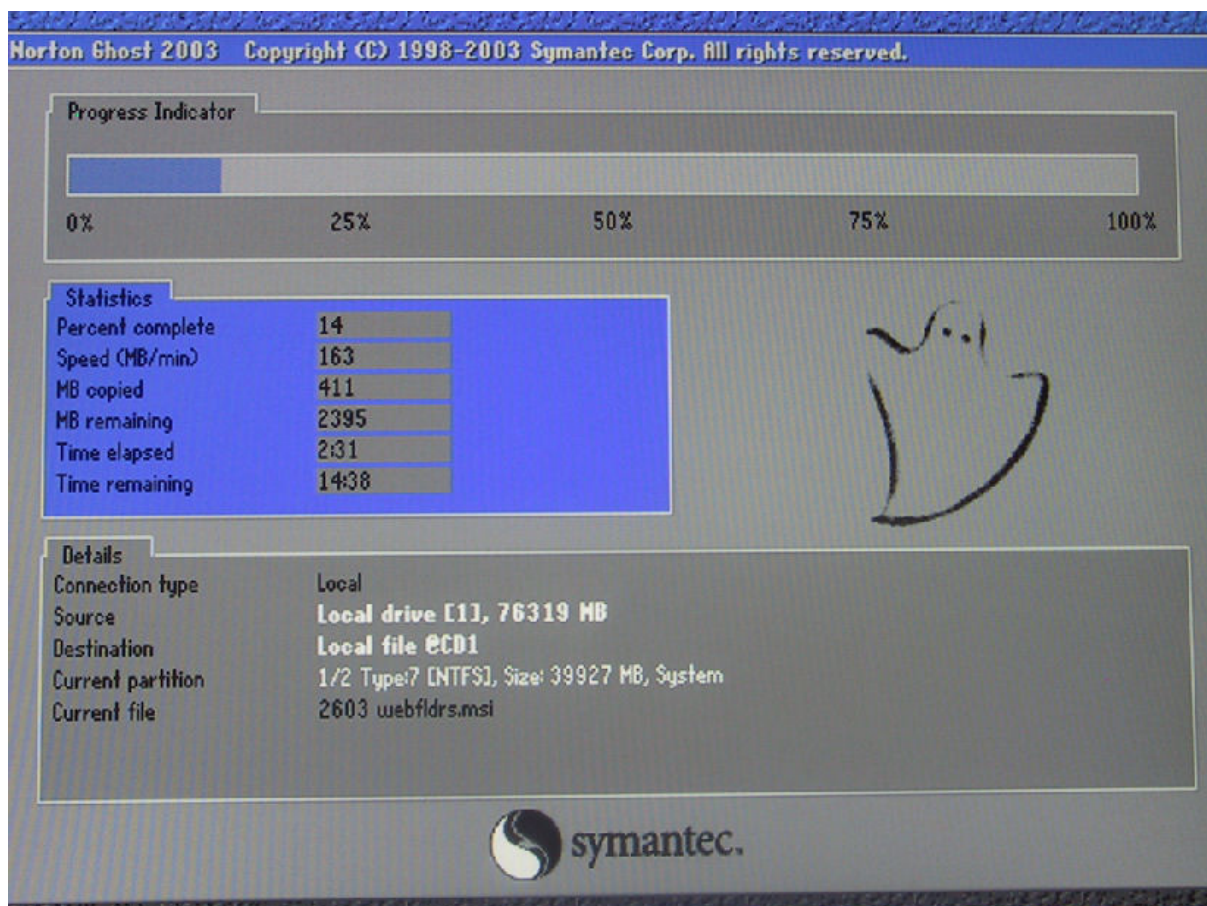
If a disk error situation comes up, and you have to install the XP operating system all over again, perform the following procedure:

- 1 Put the *System Setup DVD* into the DVD drive.
- 2 Reboot the computer by pressing the **ON-OFF** switch on the computer and wait until the computer is totally shut down. Then press the **ON-OFF** switch to restart.

The **MAIN MASTER MENU** followed by the DOS prompt **Q:\>** is displayed:

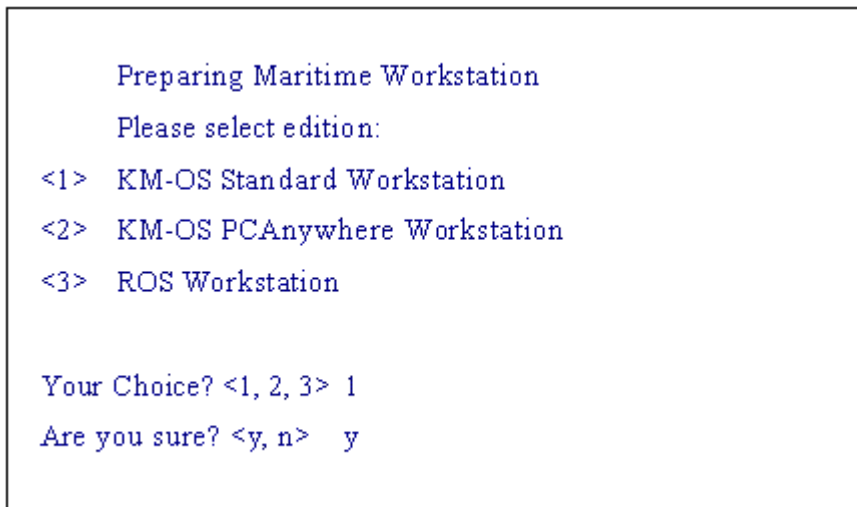
Refer to *Main Master Menu* on page 7.

- 3 Select operating system to be installed (e or n), and press **Enter**.
- 4 The following dialog is displayed while the operating system is being installed:



btm005L.r8

- 5 When installation of XP operating system is completed, the computer comes up showing your desktop in XP style.
- 6 Reboot the computer by pressing the **ON-OFF** switch on the computer and wait until the computer is totally shut down. Then press the **ON-OFF** switch to restart.
- 7 The following dialog is shown:



bm090508a

Note _____

The following choices are available:

<1> is for all standard ICS, PA and NAV installations.

<2> is for DP with PCAnywhere.

<3> is for Remote Operating Station.

8 Select as appropriate.

- a** If **1** is selected, and **Enter** is pressed, the XP Setup for ICS/PA/NAV system is configured.

Note _____

During the configuration process the computer will be rebooted a number of times.

- b** If **2** is selected, and **Enter** is pressed, the XP Setup for DP system is configured.
- c** If **3** is selected, and **Enter** is pressed, the following dialog for further ROS Workstation preparation, is displayed:


```
Preparing ROS Workstation

Please select:
(1)  ROS1 Workstation
(2)  ROS2 Workstation
(3)  ROS3 Workstation
(4)  ROS4 Workstation
(5)  ROS5 Workstation
(6)  ROS6 Workstation
(7)  ROS7 Workstation
(8)  ROS8 Workstation
(9)  ROS9 Workstation
(10) ROS10 Workstation

Your Choice? ROS (x)
```

bm090509a

The user is to select station number, and then the IP addresses and station name is automatically selected.

- 9 When preparing of Maritime Workstation is completed, the computer comes up showing your desktop in XP style.

Note _____

When XP is reinstalled, setup is to be performed.

©2010 Kongsberg Maritime