



Images and Function modules

References

- Online User Guide - Basic principles and concepts/Control functions
- Vessel specific KFDD Common/General system



KONGSBERG

Content

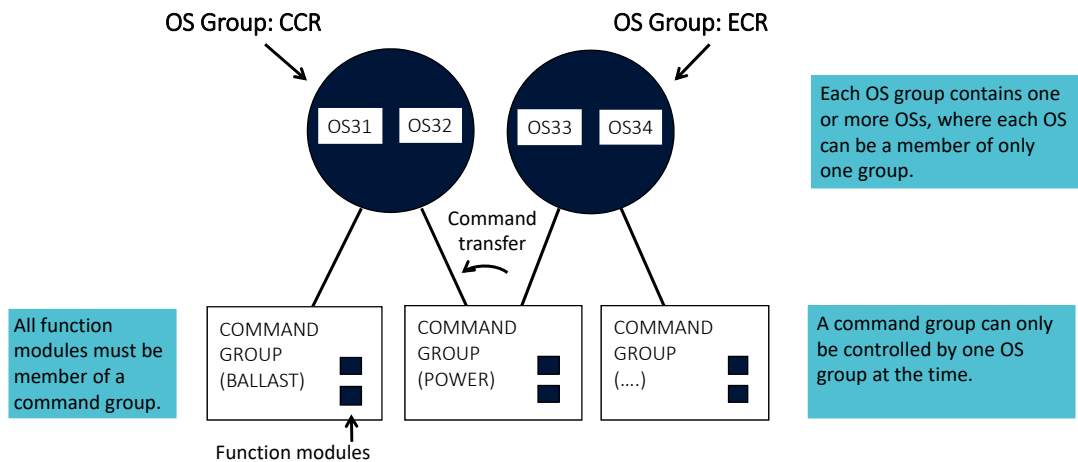
Command Control System and Access Control System:

- OS groups
- Command groups
- Command control system philosophy
- Transfer command
- User and user groups
- Privileges and Access rights
- Change user



KONGSBERG

OS groups and command control philosophy





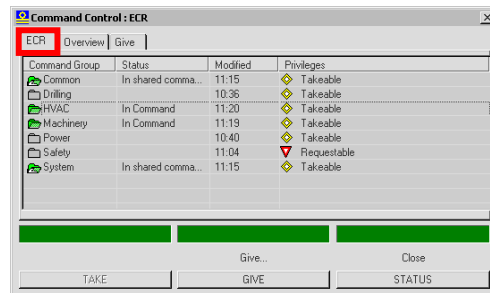
KONGSBERG

Command control Dialog Box

Select one of the buttons for Command Control
(Take, Give or Status)



Your OS Group



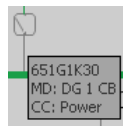
Command groups

- Green - in command by this OS group
- Grey - in command by another OS group



KONGSBERG

Identify the lack of Command control



Third line in the
module tool tip



Forbidden
symbol



KONGSBERG

Take command

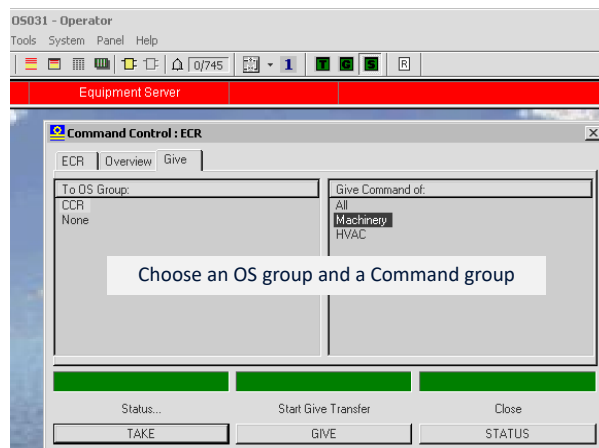
Chosen command group

This text gives the action of the button below



KONGSBERG

Give command



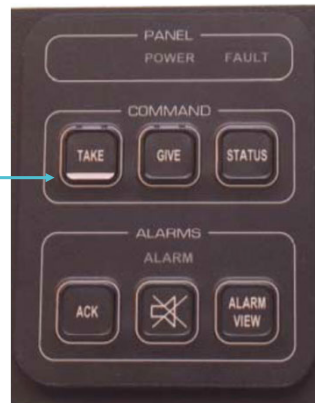
- Press GIVE to start transferring the command
- T and TAKE start flashing



KONGSBERG

ALC panel

White underline indicates
double click for Take



KONGSBERG

Command Override

In case of a situation where a control location must be abandoned the system has the following options for operation:

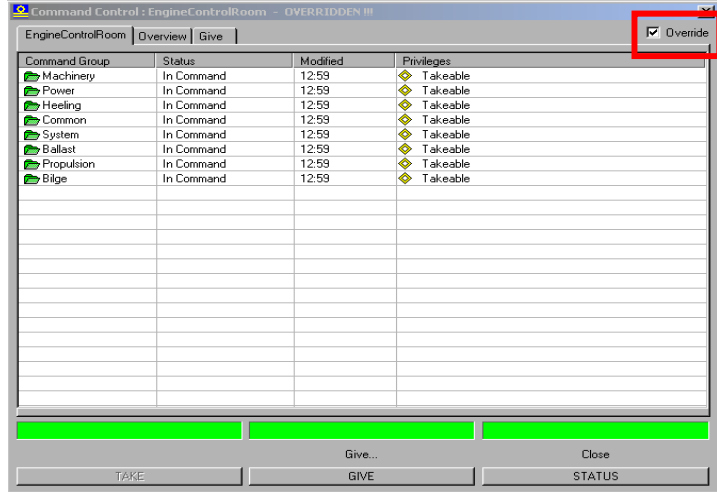
1. For command groups that have a secondary operation possibility (acquirable command for a group) the control will be available in case contact to all stations in the primary control room is lost. The user must then select the group (which at this stage will be in alarm "Group Not Under Control") and push "Take".
2. An emergency user defined in the "PowerUserCmd" group may override the command control system. The function is password protected and only intended to be used as last resort in case of a situation where the main control room is inaccessible.



KONGSBERG

Command Override

- Activating the “Override” tick-box in the upper right corner will open the OS in use for control of all areas
- The option is not available/visible unless correct user login has been performed



KONGSBERG

Users and user groups

User Group	Description
Guests	Members can only monitor the system
Users	Members can monitor and operate the system
Power Users	Members can monitor, operate and change parameters
Administrators	Members have full access to the system
System	For Kongsberg Maritime internal use only

Ref: KFDD Common/General system

By default the following users are created:

User	Member of user group
Guest	Guests
Operator	Users
Captain	Power Users
Chief	Power Users
Yard	Administrators
System	Administrators
Kongsberg	Administrators
Administrator	Administrators



KONGSBERG

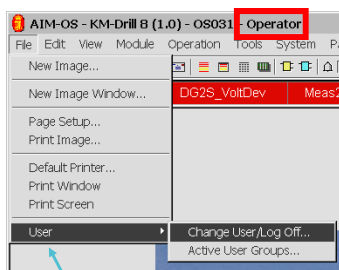
Example of some privileges and access rights

Security Groups	Description	User Groups			
		Guests	Users	Power Users	Administrators
ModuleOperation_Operate	Write access to Module operation dialogs		X	X	X
ModuleOperation_ReadParameterFree	Read free parameters in module parameter view		X	X	X
ModuleOperation_ReadParameterLimited	Read limited parameters in module parameter view		X	X	X
ModuleOperation_ReadParameterRestricted	Read restricted parameters in module parameter view		X	X	X
ModuleOperation_ReadTerminalView	Permission to view module terminal view dialog		X	X	X
ModuleOperation_WriteParameterFree	Write free parameters in module parameter view			X	X
ModuleOperation_WriteParameterLimited	Write limited parameters in module parameter view			X	X
ModuleOperation_WriteParameterRestricted	Write restricted parameters in module parameter view			X	X
ModuleOperation_WriteTerminalView	Write terminal values in module terminal view dialog			X	X
Module_ReadModuleMode	Permission to view the Module Modes dialog		X	X	X
Module_WriteModuleMode	Permission to write changes from the Module Modes dialog			X	X
OSKCmdCtrl_Acquire	Users without this permission cannot have command control. In the sense of Command Control the OS is regarded as dead		X	X	X
OSKCmdCtrl_TakeForced	Users without this permission cannot take command controlled forced		X	X	X
OSKOS_Exit	Users without this permission cannot exit the OS			X	X
OSKTrend_UserDefind	Users without this permission cannot create and edit User Defined Trend images		X	X	X

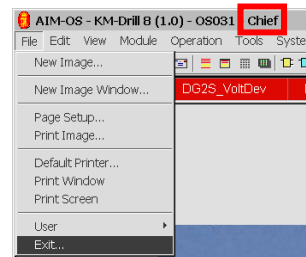
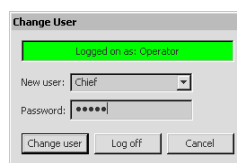


KONGSBERG

Change user



OS-Exit is usually not allowed when logged in as Operator.
(User Group: Users)



The privilege to Exit the OS is normally granted to Power Users.



KONGSBERG

Exercise:

- Take command



KONGSBERG

Learning Objectives

- Explain how an Operator Station group is defined
- Identify Operator Station groups in the system
- Explain how a Command group is defined
- Identify the Command groups in the system
- Explain the Command Control philosophy
- Identify the lack of command control
- Interpret and use the Command Control Dialog Box
- Recognise the Users and User groups
- Give examples of privileges given by a specific user
- Change user



KONGSBERG

**End of the
presentation**

KONGSBERG PROPRIETARY - See Statement of Proprietary Information