



Flexi Module

References

- Kongsberg K-Chief 700 Integrated Control System Product Description, 304844/B
- Kongsberg K-Chief 700 Operator Manual, 332618/B
- Online User Guide Function modules / Flexi-modules / Reference information



KONGSBERG

Content

- Identify a flexi module
- Access multiple module information views (terminal view, parameter view, show connection etc.)
- Describe the functionality of some logic elements
- Access description of logic elements from the user guide
- Give examples of usage of the flexi module

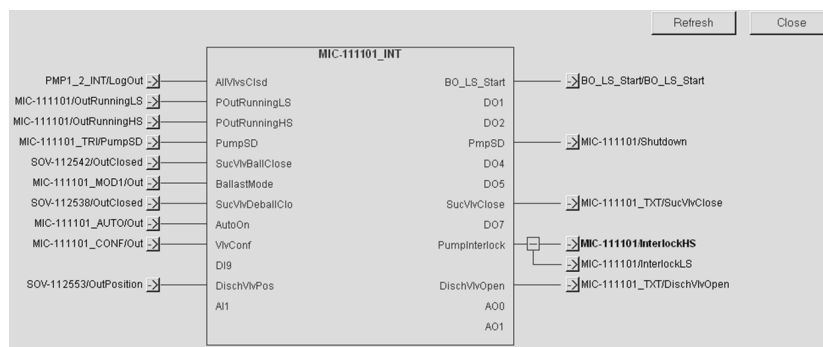
WORLD CLASS – Through people, technology and dedication

KONGSBERG PROPRIETARY - See Statement of Proprietary information



KONGSBERG

Identification of a Flexi module



- The tag name often contains the name to the module it controls (e.g. MIC-111101)
- Spare terminals are named DI, AI, DO, AO

WORLD CLASS – Through people, technology and dedication

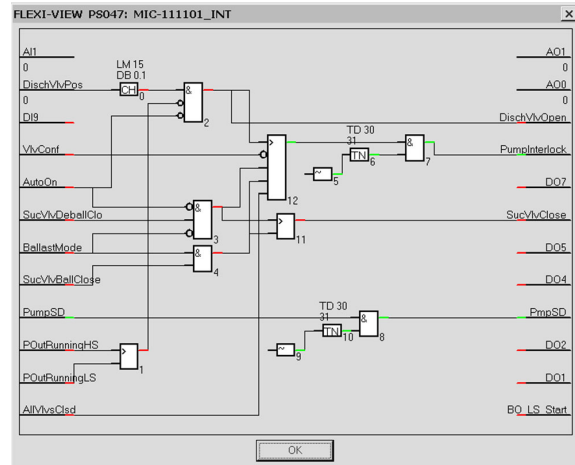
KONGSBERG PROPRIETARY - See Statement of Proprietary information



KONGSBERG

Flexi module concept

- Flexi modules are designed to handle specific tasks
 - Different conditions give for instance interlock to a pump
- The module functions are built from logical elements (primitives)
- The Parameter view shows the logical elements and how they are connected
- Analogue terminals: Current value is shown underneath the terminal
- Digital terminals: Current status is shown by colour: Green = 1 Red = 0



WORLD CLASS – Through people, technology and dedication

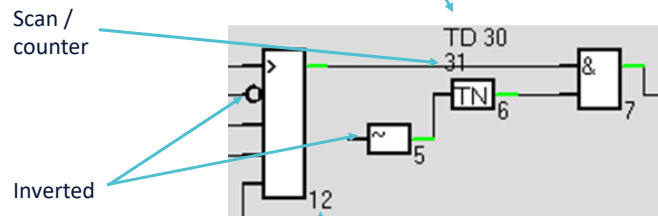
KONGSBERG PROPRIETARY - See Statement of Proprietary information



KONGSBERG

The logic elements (primitives)

A logical element, may include parameters. The parameters are shown with current value at the top of the element.



The number in the lower right corner shows the order of execution of the elements within a flexi module.

WORLD CLASS – Through people, technology and dedication

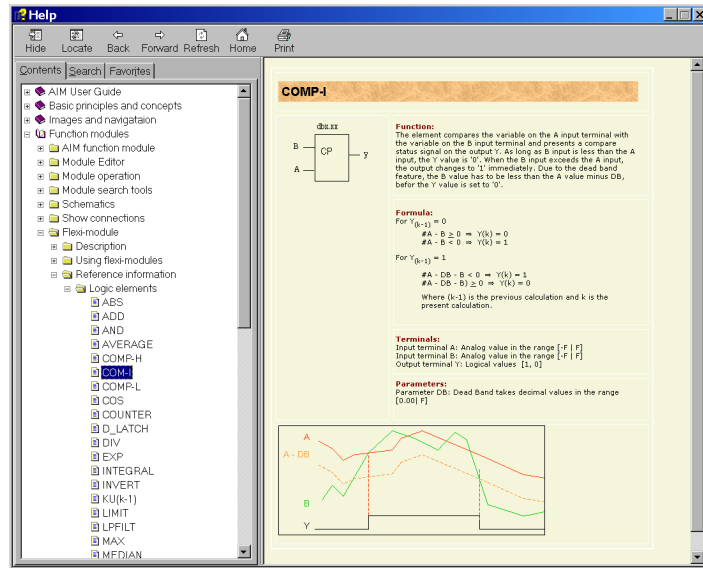
KONGSBERG PROPRIETARY - See Statement of Proprietary information



KONGSBERG

User Guide: description of logical elements

- Type of logical function for an element is indicated by a symbol or abbreviation
- A functional description of each logical element is found in Online User Guide



WORLD CLASS – Through people, technology and dedication

KONGSBERG PROPRIETARY - See Statement of Proprietary information

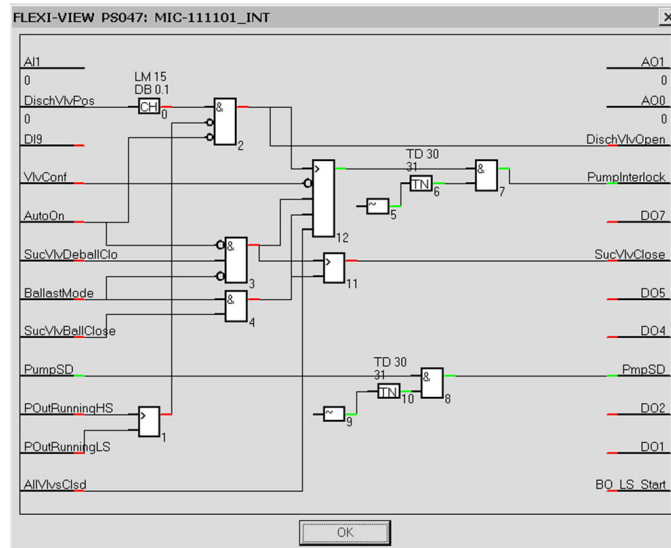


KONGSBERG

How to interpret a flexi module

- Start from right and read towards the left:

Start from the output terminal and work your way through the logical elements – to the flexi modules input terminals



Faultfinding direction

WORLD CLASS – Through people, technology and dedication

KONGSBERG PROPRIETARY - See Statement of Proprietary information



KONGSBERG

Exercise:

- Flexi module

WORLD CLASS – Through people, technology and dedication

KONGSBERG PROPRIETARY - See Statement of Proprietary information



KONGSBERG

Learning Objectives

- Identify a flexi module
- Describe the presentation of the parameter view
- Exemplify logic element properties
- Access description of logic elements from the user guide
- Give examples of usage of the flexi module

WORLD CLASS – Through people, technology and dedication

KONGSBERG PROPRIETARY - See Statement of Proprietary information



KONGSBERG

**End of the
presentation**

KONGSBERG PROPRIETARY - See Statement of Proprietary Information