



Introduction

This document describes some tests on an Artemis mk5 when a unit does not communicate with the Artemis software installed on a PC

Checks

Step 1) On board of the vessel there should be an external control panel for test purpose. (This is standard delivered with the system)



External operate panel

When this is available please connect to the artemis unit at the “operating panel socket” This is the middle socket of the unit.

Do you have communication: Do you see data (eg frequency, address) and is it possible to control the unit (eg turn the scanner)

Yes:

Go to step 2

No:

Open the artemis unit.

Take a look to the small display at the front of the AUP board





The unit should NOT be booting (starting up all the time)
You should see MOP:UNS or IDLE or standby

If you don't see data at all or artemis booting all the time there is a power problem. Check if 230VAC available.
Check if 5V is stable and high enough.
5V can be measured at power socket at the back of the interconnectionboard.
If 5V is too low (eg 4.7V or lower) the AUP will reboot all the time.
To solve this 5V problem perform engineer note I have included as well.
(Please let me know if this is the case because if so we will ship under warranty new type of interconnection board to solve this problem)

On left side of front of AUP there are 2 LED's They should be flashing as indication the AUP is transmitting information to the A5EOR board (communication board)
If AUP is good go to step 2

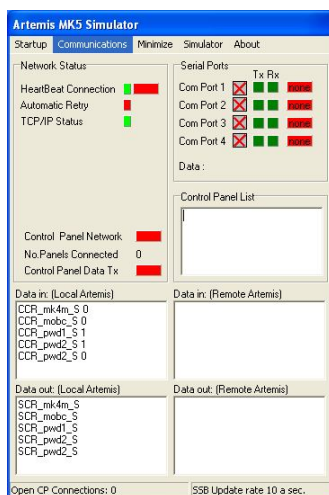
Step 2)

The problem is most likely caused by A5EOR (communication) board or cabling.
Check connections in signal connector as well

Step 3)

Select correct communication protocol of the artemis software:

Select <communication> <advanced network> when the communication is by network cable.



Communication failure



Page 3 of 3

SSB update rate should be 10 a sec
Heartbeat LED should be flashing.
Data scrolling in data in and data out box.

Note

Please note you can use any type of computer for the artemis software. So in case of emergency just get a different computer with 2 com ports. Install the artemis software on it.

Disable any firewall

Set the TCP/IP address to 192.168.044.201

When changing a computer only the DP and BLOM setting have to be recovered.