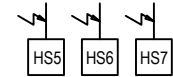
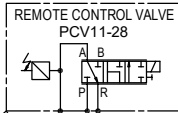


INSTRUMENT LIST					
INSTR. NO.:	APPLICATION	INSTRUMENT	RANGE/RATING	SET POINT	FUNCTION/REMARKS
HS1-4	EMERGENCY STOP, DECK	PUSH BUTTON			OPEN/CLOSED, CONTROLLED SYSTEM SHUT DOWN WHEN OPEN
HS5-7	EMERGENCY STOP, ENGINE ROOM ENTRANCE	PUSH BUTTON			OPEN/CLOSED, CONTROLLED SYSTEM SHUT DOWN WHEN OPEN
PCV11-28	REGULATION OF PUMP SPEED	PROPORTIONAL VALVE W/FEED BACK	0-350 bar	0-10 V 4-20 mA	RAMPTIME 20 SEC.
M14	EL.MOTOR FOR TRANSFER PUMP				
XV1	COOLING WATER INLET VALVE		50/30°C		OPEN/BY-PASS CONTROLLED FROM FRAMO SYSTEM CONTROL PANEL
LSL21-22	BALLAST SUCTION LEVEL LOW	LEVEL SWITCH			START EVACUATION
XY21-22	EJECTOR CONTROL ON/OFF	SOLENOID VALVE			ENERGIZED DURING EVACUATION OF BALLAST PUMP

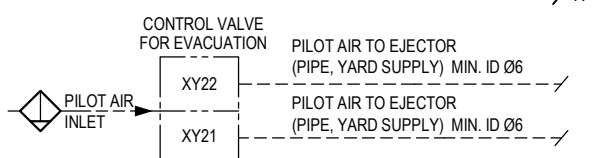
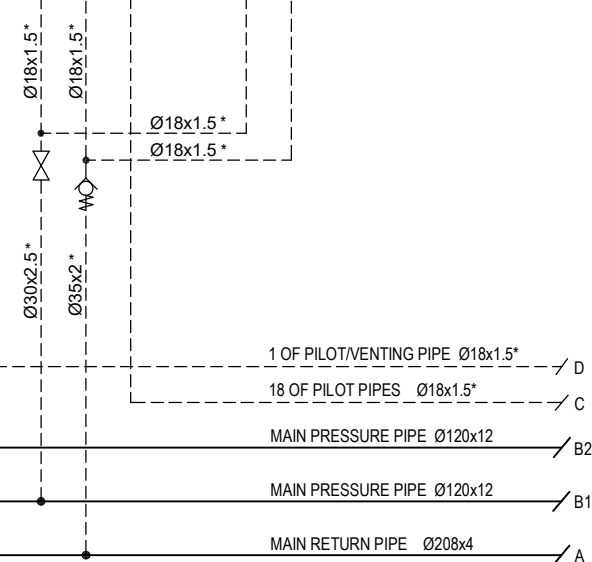
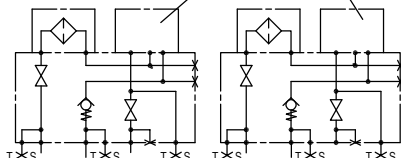


EMERGENCY STOP
PUSH BUTTON FOR
CENTRAL LOCATION
OUTSIDE OF ENGINE ROOM

DETAIL



REMOTE CONTROL
VALVE ASSEMBLY



CLASSIFICATION SOCIETY: SEE FRAMO SPECIFICATION.
MAX. HYDRAULIC SYSTEM PRESSURE : 273 BAR AT FULL FLOW
RETURN PRESSURE PRESSURE : SET PRESSURE 6 BAR
MAX. HYDRAULIC OIL TEMPERATURE : 60°C

PIPES:
CALCULATIONS/DIMENSIONS FOR HYDRAULIC HIGH PRESSURE
PIPING TO BE BASED UPON SYSTEM PRESSURE

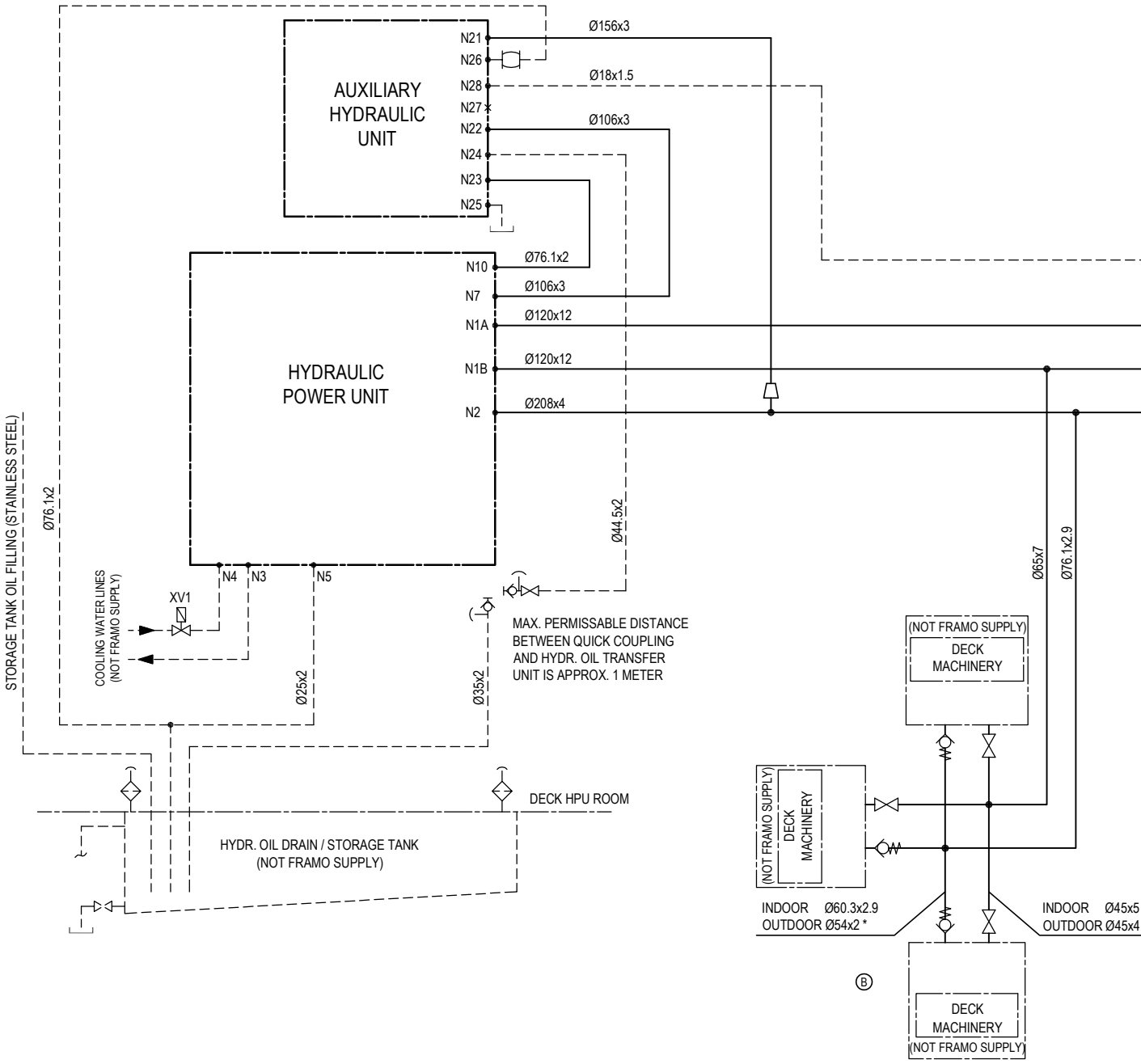
HYDRAULIC RETURN PIPING IS TO HAVE PRESSURE CLASS PN16
DUE TO NOISE AND MECHANICAL STRENGTH PROPERTIES

ALL GIVEN PIPE DIMENSIONS ARE MINIMUM DIMENSIONS

HYDRAULIC PIPES ON OPEN DECK:
- HIGH PRESSURE MAIN PIPES : DUPLEX STAINLESS STEEL.
- HIGH PRESSURE BRANCH PIPES: DUPLEX STAINLESS STEEL.
- LOW PRESSURE PIPES : STAINLESS STEEL AISI 316L.
- PILOT PIPES : DUPLEX STAINLESS STEEL.

HYDRAULIC PIPES IN-DOOR:
- HIGH PRESSURE PIPES : CARBON STEEL.
- LOW PRESSURE PIPES : STAINLESS STEEL AISI 316L.
- LOW PRESSURE BRANCH PIPES: CARBON STEEL
- PILOT PIPES : DUPLEX STAINLESS STEEL.

* STAINLESS STEEL



			Status	Sign.	Date	 HYDRAULIC DIAGRAM ENGINE ROOM	This drawing is our property. It is not to be transcribed, copied or published without our written consent, nor to be reissued in any way. Replaces: 0216-2957-101 Replaced by:
			Constr.	MAAH	06 Jun 22		
			Drawn by	JEOE	06 Jun 22		
B	Revised	CAND/06Oct23	Checked	MAAH	06 Jun 22		
A	Revised	JEOE/23Jun22	Prot. rel.				
R	Description	Sign./Date	Prod. rel.	MAHO	06 Jun 22		