



- HP & LP measuring point

- “Pop up” Indicator

- Isolating valve

- System Press. Relief valve

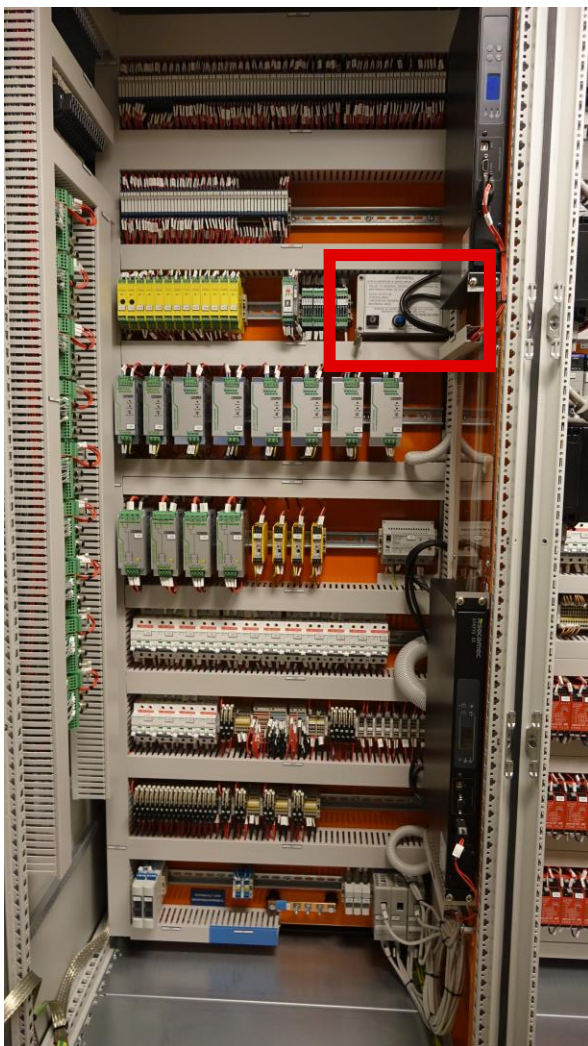
- Manual Control valve

Filter

Proportional Control Valve

4x Unloading Solenoid

Mode 2 Panel Inside UCP



Required tools are located in the emergency override panel:

Name	
Spanner	10 mm
Allen key	3 mm
Spanner	19 mm
Allen key	5 mm

1. Break glass cover and operate switch for bypassing stop signals from control panel.
2. Start two of the three feed pumps locally at the starters.
3. Start required power packs locally at the starters.
4. Override control valves for required ballast pumps (fig.1):
 - 1) Open lock nut.
 - 2) Turn allen key CW until it stops.

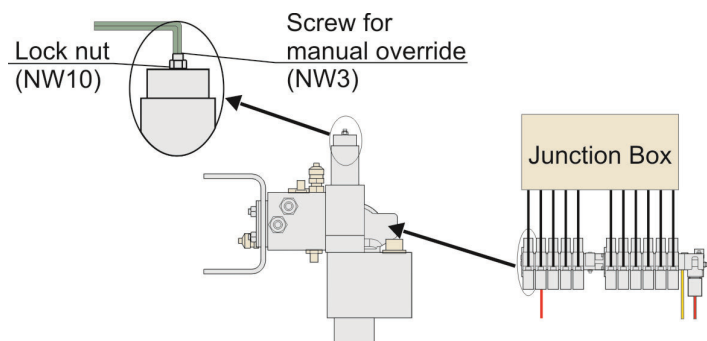


Fig.1: Ballast pump control valve – override.

5. Regulate system pressure, and thereby ballast pump pressure, manually at the HPU:
 - 1) Open manual pressure control valve (turn CCW). Refer to fig. 2.
 - 2) Close isolating valve for system pressure control valve (turn CW).
 - 3) Regulate system pressure by using manual pressure control valve.

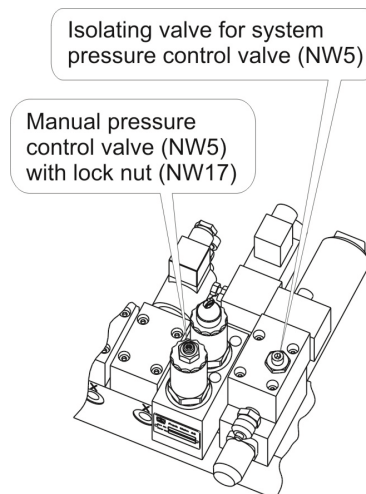


Fig. 2: Manual system (pump) pressure control.